

ENVIRONMENTAL, COASTAL AND WATER RESOURCES ENGINEERING



Company Overview

Since 1984, Applied Technology & Management, Inc. (ATM) has been a valuable resource for public and private clients facing engineering and management challenges on the land, in the water, or along the shore. Our professional staff of engineers and scientists are highly skilled in project planning, design, permitting, implementation, and monitoring. ATM regularly affords its services to large and small projects throughout the United States and internationally, either on a continual or on-call basis.



Coastal Engineering and Restoration

ATM understands the complexity of coastal systems and routinely works with public and private clients to implement successful protection and restoration projects. ATM has earned its excellent reputation for developing effective solutions by carefully assessing each area's specific dynamics and needs, and then developing appropriate alternatives for the challenges they pose.

- Shoreline Fortification Feasibility, Design, and Permitting
- Environmental Assessment and Restoration
- Inlet Management
- Storm Erosion and Setback Analysis
- Analysis of Structural Design, Performance, and Impact
- Mitigation Design
- Numerical Modeling of Waves, Currents and Shorelines
- Hydrographic and Bathymetric Surveying
- Sand Sourcing for Nourishment Projects
- Economic Analysis



Marina and Waterfront Development

ATM is renowned throughout the United States and internationally for its full-service, turnkey approach to marina and waterfront development. Our highly skilled and interdisciplinary staff of marina specialists, coastal and environmental engineers, scientists, and operations specialists approach development from a holistic perspective. This enables us to provide the engineering, business, and environmental solutions that generate the maximum benefits from every project.

- Market Analysis
- Due Diligence
- Feasibility Studies
- Planning and Design
- Financial Analysis and Pro Formas
- Environmental Permitting
- Construction Administration
- Public-Private Partnerships
- Operation Plans



Port and Harbor Development

Whether addressing hydrologic engineering challenges or environmental impact concerns, ATM applies the latest technologies and management strategies to achieve port and harbor project objectives. We help our clients effectively site and plan waterfront facilities, streamline permitting and environmental compliance, minimize operations and maintenance costs, and coordinate long-term strategic development.

- Permitting and Environmental Compliance
- Design Alternative Analysis
- Field Services and Surveys
- Dredged Material Management
- Sedimentation Minimization
- Predictive Modeling
- Strategic Development





Environmental Management and Engineering

Whether addressing concerns about environmental sustainability, designing wastewater treatment upgrades, or permitting wetland mitigation sites, ATM professionals have the demonstrated qualifications to meet client goals. We have a long history of reducing the confusion and cost-impact of environmental regulations and engineering requirements in a broad range of distinct environments. ATM works with each client, whether public or private, to swiftly maneuver through regulatory labyrinths, economically fulfill compliance obligations, and effectively develop successful projects.

- Wastewater
- Stormwater
- Industrial Services
- Potable Water
- Regulatory Compliance
- Agricultural Services
- Air Emissions
- Environmental Assessments
- Wetland Services
- Surveying and Mapping
- Ecological Studies
- Field Monitoring
- Land and Resource Management
- NEPA Permitting



Water Resources Engineering

Population and development continually encroach on water resources through use, discharge, or alteration of flow. ATM's exceptional knowledge of the science, engineering, and regulatory aspects of water resources issues enables us to evaluate alternatives from a multitude of perspectives and build consensus among affected parties. This approach results in a satisfactory balance between water quality, quantity, and designated use.

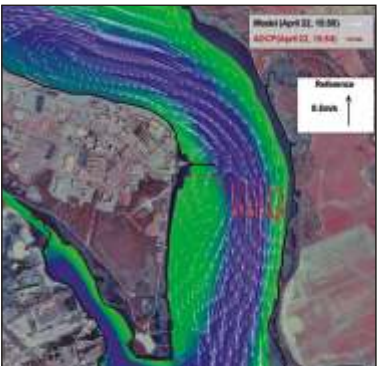
- Comprehensive Watershed Management Services
- Modeling of Freshwater and Coastal Systems
- Ecological Modeling and Evaluation
- Regulatory Management and Stakeholder Facilitation
- Non-Point Load Determination and Management
- Environmental and Natural Systems Engineering
- Comprehensive Data Collection and Management



Numerical Modeling

Water resources modeling is an integral part of the decision making process for today's engineers, regulators, and planners. ATM's modeling experts are proficient in the use of a broad range of modeling tools that simulate all aspects of the hydrologic cycle, examining both quantity and quality, as well as natural and altered scenarios. ATM also provides tailored data collection efforts that supply comprehensive and quality data for scientifically supported presentation, calibration, and analysis.

- Reservoir and Lake Simulations
- Thermal Discharges
- Mixing Zone Determinations
- Hydrodynamic Modeling
- Pollutant Transport and Water Quality
- Watershed Hydrology and Loading
- TMDL Studies
- Natural Resource Impact Modeling
- Sediment Transport
- Coastal Processes



Stewards of the Environment

ATM promotes the stewardship of environmental resources by examining the sustainability of each and every project. In our dual role as advocates for the environment and for our clients, ATM works to achieve a balance between environmental protection and use that satisfies project sponsors, stakeholders, and regulating agencies.





www.appliedtm.com

(800) 275-6488

411 Pablo Avenue
Jacksonville Beach, FL 32250
tel (904) 249-8009
fax (904) 249-8007

2770 NW 43rd Street
Suite B
Gainesville, FL 32606
tel (352) 375-8700
fax (352) 375-0995

1485 N. Atlantic Avenue
Suite 116-S
Cocoa Beach, FL 32931
tel (321) 799-2332
fax (321) 799-2331

400 S. Australian Avenue
Suite 855
West Palm Beach, FL 33401
tel (561) 659-0041
fax (561) 659-3733

P.O. Box 16920
Savannah, GA 31416
tel (912) 238-3002
fax (912) 238-0882

PO Box 20336
Charleston, SC 29413
tel (843) 884-8750
fax (843) 884-8935

PO Box 24156
Hilton Head Island, SC 29925
tel (843) 837-9525
fax (843) 837-9526

360 Thames Street
Suite 1B
Newport, RI 02840
tel (401) 841-8901
fax (401) 841-8903