

ENVIRONMENTAL ENGINEERING SERVICES



Providing Innovative Engineering and Management Solutions

Creatively Addressing Environmental Engineering Issues

Understanding today's complex regulatory framework is often daunting for private and public entities alike. Meeting long lists of regulatory requirements can be a costly and tremendous challenge. Permitting delays, major design changes, or worse may result if the appropriate resources are not directed to a project from the beginning.

For more than 20 years, Applied Technology & Management, Inc. (ATM) has been a valuable resource for public and private clients needing to maneuver through regulatory labyrinths, economically fulfill regulatory obligations, and successfully develop sustainable projects. ATM has a reputation of supplying clients with innovative management solutions that maximize the full potential of limited capital resources, streamline the permitting and environmental compliance process, optimize the service capacity of current and future systems, and minimize operations and maintenance costs, both for today and tomorrow.



Wastewater

Stormwater

Industrial Services

Potable Water

Regulatory Compliance

Agricultural Services

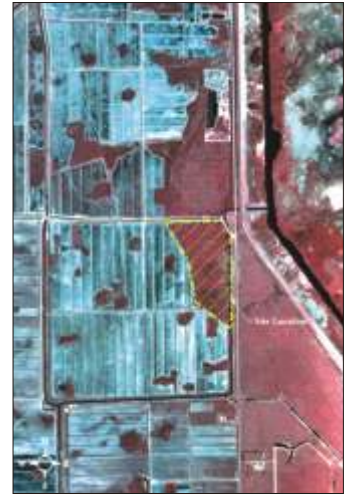


Wastewater

ATM's engineering professionals have decades of experience working directly for and providing consulting services to wastewater utilities. This expertise enables us to give wastewater clients superior assistance with the engineering and management of their systems.

ATM's wastewater expertise includes:

- Master Planning
- Plant Design
- Pump Station Design and Rehabilitation
- NPDES Permitting
- Alternative Wastewater Treatment Technologies
- Operations and Maintenance Assistance
- Wastewater System Treatment Effectiveness Evaluations



Design of a created wetland treatment system

Stormwater

ATM's comprehensive approach to stormwater management is unparalleled in the industry. Our professionals have the demonstrated ability to balance environmental concerns, regulatory mandates and economic constraints in order to develop effective solutions to even the most complex stormwater issues.



Stormwater management system design for an industrial facility

ATM's stormwater staff provide clients with:

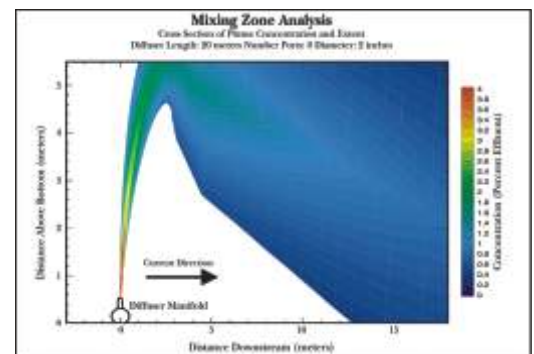
- Site Development Planning and Engineering
- Master Planning and GIS Structure Inventory
- Watershed Assessments
- Pre/Post Development Loading Assessments
- Innovative Permitting Strategies
- Infrastructure Design and Rehabilitation
- Water Quality Management
- MS4 Permit Compliance

Industrial Services

ATM understands the diverse needs of our industrial clients, and we work with them to produce innovative and effective solutions to meet their long-range goals.

ATM routinely assists industrial clients with issues involving:

- Regulatory Compliance
- Permitting Strategies
- Waste Reduction
- Alternative Treatment Technologies
- Mixing Zone Studies
- TMDL Strategies



Mixing zone study conducted to mitigate/reduce toxicity of wastewater effluent discharge

Providing Innovative Engineering and Management Solutions

Potable Water

ATM is adept at performing a full suite of water-related services that afford clients guidance from a project's initial concept through to long-term operation and maintenance.

Our staff provides expert assistance during each phase of a project, including:

- Infrastructure Design
- Permitting
- Financing and Rate Structuring
- Modeling and Water Quality Evaluations
- Management Support
- Consumptive Use Permits
- Water Source Evaluation Studies



Water quality modeling/monitoring and hydrodynamic modeling for a pond-deepening and tidal stormwater impoundment project

Regulatory Compliance

ATM's monitoring of the complex and ever-changing environmental regulations enables us to present clients with up-to-date information and guidance for compliance planning and implementation.



Wastewater treatment plant belt press

ATM's diverse staff has decades of experience providing clients with regulatory services and solutions, including:

- Comprehensive Compliance Programs
- Water and Wastewater Monitoring, Planning and Studies
- Operations and Maintenance Performance Reporting
- Capacity Analysis
- Effective Permitting Strategies
- Anti-Degradation Studies and Analysis/WQBEL

Agricultural Services

More and more frequently, water quality concerns are subjecting agricultural operations to increased levels of scrutiny. ATM assists agricultural facility owners and operators in addressing regulatory issues and planning for a sustainable and profitable future.

Our services for agricultural clients include:

- Nutrient Management Planning
- CAFO Permitting
- Ground Water Monitoring
- Animal Waste Treatment Technologies
- BMP Applications



Confined animal feeding operation permitting and nutrient management system design



Representative Environmental Engineering Experience

Stormwater Master Plan City of Jacksonville Beach, Florida

The City of Jacksonville Beach contracted with ATM to update the City's Stormwater Master Plan with the goals of mitigating neighborhood drainage problems, developing long-term incremental improvements to the system, and recommending maintenance schedules for the entire system. ATM's services included the preparation of a GIS-based inventory of the City's stormwater facilities, review of existing stormwater functions, development of a capital improvement plan, and provision of recommendations for system operations and maintenance. The ATM-developed GIS database of stormwater structures is used as a tool for developing solutions to stormwater runoff-related problems and has improved the City's ability to provide information to the public.



GIS storm sewer on parcel map

Wastewater Engineering Services City of LaBelle, Florida

ATM was contracted by the City of LaBelle to provide professional planning, permitting, design and construction services for improving and expanding the City's wastewater treatment systems. ATM's services have included the design and construction of an expanded gravity collection system and wastewater pumping system, and a new wastewater treatment plant and effluent disposal area. Each component of the project has required extensive evaluation of the City's comprehensive land use plans, existing and anticipated facility conditionals, and alternatives analysis. At the request of LaBelle residents, ATM also prepared a Preliminary Engineering Report in support of adding several pump stations and 46,000 linear feet of gravity sewer. Additional services to be provided by ATM under this contract include the phased application of various wastewater system improvements.



Labelle wastewater treatment plant reactor

Wastewater Pump Station and Sewer Rehabilitation Jacksonville Electric Authority (JEA)

ATM assisted JEA with the planning, permitting, removal and installation of tens of thousands of linear feet of water and sewer lines underpinning portions of Jacksonville's historic residential and commercial area of Riverside. ATM's engineers evaluated and incorporated the use of trenchless technologies in their rehabilitation efforts to minimize and prevent the disturbance or destruction of the historic and highly developed area.

Eight of Jacksonville's major wastewater pump stations were evaluated. ATM made recommendations for JEA to rehabilitate the ailing facilities, which ranged from the simple removal and replacement of pump valves, fittings and motors to the demolition and replacement of an existing station with a new 15 MGD quadruplex submersible pump station. In support of these recommendations, ATM prepared all necessary contract drawings, specifications, bid forms, design calculations and permitting applications.



JEA Grove Park Pump Station





REPRESENTATIVE ENVIRONMENTAL ENGINEERING CLIENTS

Atlantis Resort, Paradise Island, Bahamas
Aurora Dairy Group
Beaufort-Jasper Water & Sewer Authority
Charleston Commissioners of Public Works
City of Baxley, Georgia
City of Hardeeville, South Carolina
City of Jacksonville Beach, Florida
City of LaBelle, Florida
City of Pooler, Georgia
City of Richmond Hill, Georgia
Colleton River Plantation, South Carolina
Dewees Island Utilities, South Carolina
Dorchester County Public Works, South Carolina
Effingham County Board of Commissioners, Georgia
First Coast Manufacturers Association, Florida
Fripp Island Public Service District, South Carolina
Fuji Vegetable Oil, Inc.
Gustafson's Dairy
JEA (Jacksonville Electric Authority)
Marineland Research Resort, Florida
Martin County, Florida
Nassau County, Florida
Silver Carolina Development Company, LLC
Smurfit-Stone Container Corporation
South Carolina Department of Health and Environmental Control
Summerville Commissioners of Public Works
Takeda Chemical Products USA, Inc.
United Water
Volusia County, Florida



www.appliedtm.com
(800) 275-6488

411 Pablo Avenue
Jacksonville Beach, FL 32250
tel (904) 249-8009
fax (904) 249-8007

2770 NW 43rd Street
Suite B
Gainesville, FL 32606
tel (352) 375-8700
fax (352) 375-0995

1485 N. Atlantic Avenue
Suite 116-S
Cocoa Beach, FL 32931
tel (321) 799-2332
fax (321) 799-2331

400 S. Australian Avenue
Suite 855
West Palm Beach, FL 33401
tel (561) 659-0041
fax (561) 659-3733

P.O. Box 16920
Savannah, GA 31416
tel (912) 238-3002
fax (912) 238-0882

260 West Coleman Boulevard
Suite A
Charleston, SC 29413
tel (843) 884-8750
fax (843) 884-8935

PO Box 24156
Hilton Head Island, SC 29925
tel (843) 837-9525
fax (843) 837-9526

360 Thames Street
Suite 1B
Newport, RI 02840
tel (401) 841-8901
fax (401) 841-8903